

Name & Address of the Institute	<b>Vidyalankar Institute of Technology</b>		
	Vidyalankar College Marg , Wadala (E), Mumbai 400 037		
	(022) 2416 11 26		
	<a href="mailto:principal@vit.edu.in">principal@vit.edu.in</a>		
	www.vit.edu.in		
Name & Address of the Principal	Dr. Sunil Patekar		
	(022) 2416 11 26		
	<a href="mailto:principal@vit.edu.in">principal@vit.edu.in</a>		
Name of the Affiliating University	University of Mumbai		
Year of Establishment	1999		
Accessibility	Nearest bus stop – route 110	VIT	0 Km
	Nearest rail station (Harbour)	Wadala	1.2 Km
	Nearest rail station (Central/Western)	Dadar	3.5 Km
	Nearest mono rail station	Bhakti Park	1.5 Km
	Nearest state bus terminus	Dadar	3.5 Km
	Nearest air port	Mumbai	14 Km

Governing Body

Dr. Sanjeevani Deshpande	Chairperson, VDT	Educationist
Shri Vishwas Deshpande	Trustee, VDT	Educationist
Shri Avinash Chatorikar	Trustee, VDT	Educationist
Dr. Vijay Gupchup	Nominee, VDT	Ex Chairman, NBA, Ex ProVC, Mumbai University, Ex Principal, VJTI, Mumbai
Shri Suresh Hemmady	Nominee, VDT	Chairman, Shamrao Vitthal Bank
Dr. S. K. Mahajan	Director, Technical Education, MS	Ex-Officio
-	Nominee, Govt. of Maharashtra	Nominee
Dr. U. Ramesh	Western Regional Officer, AICTE	Ex-Officio
-	Nominee, AICTE	Nominee
Prof. Ambadas Mohite	Nominee, University of Mumbai	Nominee
Dr. Sunil Patekar	Secretary	Principal, Vidyalankar Institute of Technology

Brief introduction of governing body members of Vidyalankar Dnyanapeeth Trust.



Dr. Sanjeevani Deshpande  
*Chairperson, Vidyalankar Dnyanapeeth Trust*

Dr. Sanjeevani Deshpande is the Chairperson of the Vidyalankar Dnyanapeeth Trust. She has a Ph.D. in English, an M.A. in English and an M.A. in Public Administration to her credit. She has more than 35 years of teaching experience at the undergraduate and postgraduate levels in both the domains of English and Public Administration.



Mr. Vishwas Deshpande  
*Managing Trustee, Vidyalankar Dnyanapeeth Trust*

Mr. Vishwas Deshpande has been a merit holder all his academic life. After his B.E. in Electrical Engineering from V.J.T.I. which he completed with flying colours, he went to the U.S.A to complete his M.S. in Microelectronics from University of Maryland, College Park.



Mr. Avinash Chatorikar

*Secretary, Vidyalkar Dnyanapeeth Trust*

Mr. Avinash Chatorikar after completing his Bachelor's degree in Chemical Engineering from U.D.C.T in 1987 went on to do his M. Tech in Chemical Engineering from I.I.T, Mumbai. Passionate about studying further, he completed his M.S. from Oklahoma State University, U.S.A.



Dr. Vijay Gupchup

*Nominee, Vidyalkar Dnyanapeeth Trust*

Dr. Vijay Gupchup, BE (Civil, University of Mumbai), MS (MIT, USA), PhD (MIT, USA), former principal of Veermata Jijabai Technological Institute (VJTI), Mumbai, Pro Vice Chancellor of the University of Mumbai and was the Chairman of the 'National Board of Accreditation' set up by AICTE. He has authored numerous technical papers and has also presented invited lectures at several Universities in the USA including MIT, Northwestern University, Drexel University, Kansas and Texas State Universities etc. He is an active member of various academic bodies of the University of Mumbai, AICTE and UGC.



Shri Suresh Hemmady

*Nominee, Vidyalkar Dnyanapeeth Trust*

Shri. Suresh S. Hemmady is the Chairman of Shamrao Vithal Co-operative Bank Limited. Shri Hemmady served as a Director (earlier served as the Managing Director) of Thana Electric Supply Company Ltd. until May 201

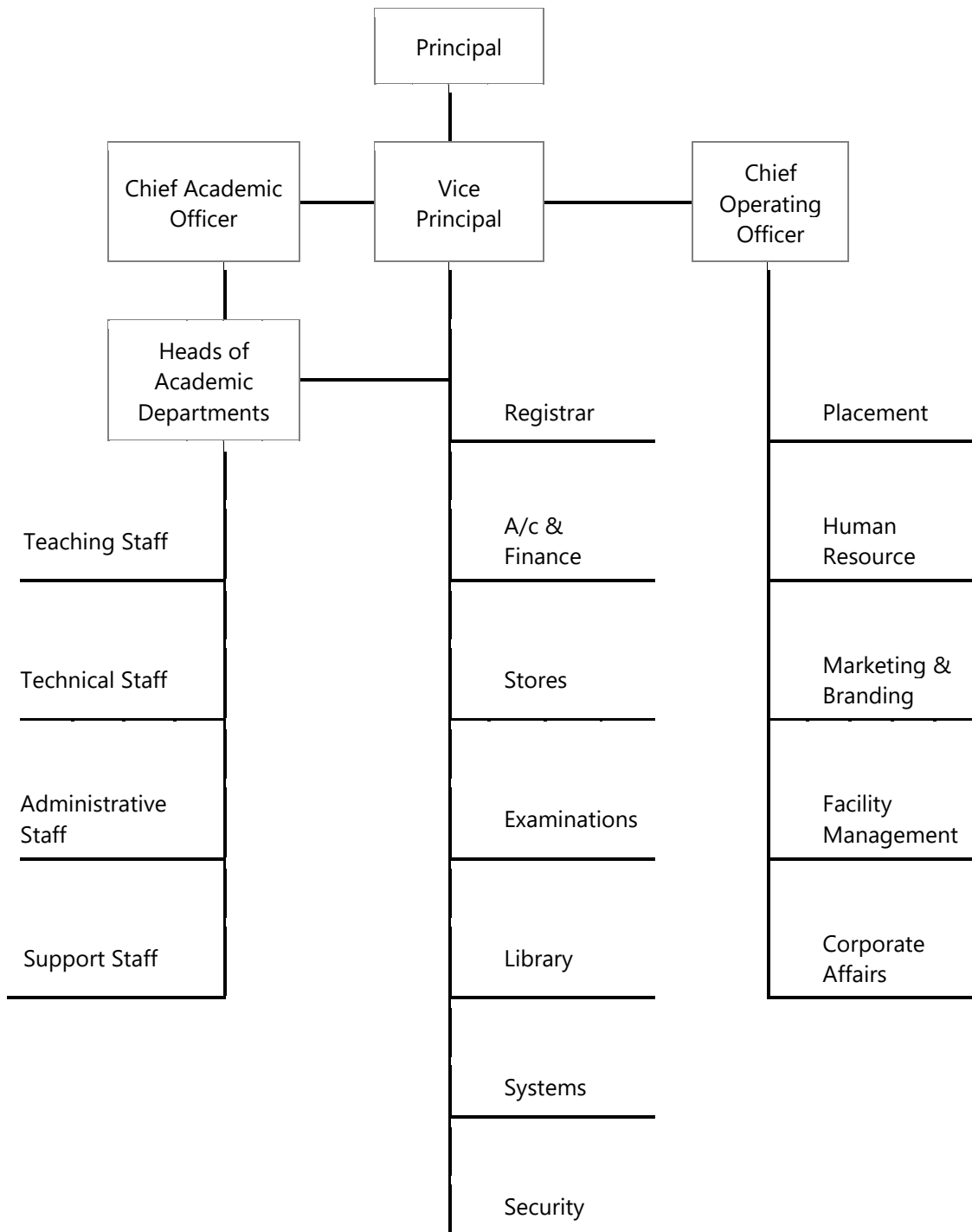


Dr. Sunil Patekar

*Principal, Vidyalkar Institute of Technology*

Dr. Sunil Patekar is the Principal of Vidyalkar Institute of Technology. He completed his LEE, BE, ME and PhD in Electrical Engineering from VJTI, University of Mumbai. He was awarded as the Best Teacher by the Government of Maharashtra (2007), the Lord Reay Gold Medal, ISTE National Award for Best Paper Presentation, etc. Dr. Patekar has co-authored 6 books on Computer Programming languages and has presented and published more than 50 technical research papers at international and national conferences and journals.

Institute Organigram



**Courses offered**

		Intake	Duration of course		Course leading to
UG	Information Technology	120	4 Years		BE
	Computer Engineering	120	4 Years		BE
	Electronics Engineering	120	4 Years		BE
	Electronics & TeleComm. Engineering	120	4 Years		BE
	Biomedical Engineering	060	4 Years		BE
UG-2 <sup>nd</sup> Yr Dir	Information Technology	060	3 Years	2 <sup>nd</sup> Shift	BE
	Computer Engineering	060	3 Years	2 <sup>nd</sup> Shift	BE
	Electronics Engineering	060	3 Years	2 <sup>nd</sup> Shift	BE
	Electronics & TeleComm. Engineering	060	3 Years	2 <sup>nd</sup> Shift	BE
PG	Computer Engineering	018	2 Years		ME
	Information Technology	018	2 Years	2 <sup>nd</sup> Shift	ME
	Electronics & TeleComm. Engineering	018	2 Years	2 <sup>nd</sup> Shift	ME
	Management Studies	120	2 Years		MMS
PhD	Computer Engineering	010	-		PhD(Tech)

For admission criteria, please refer to [www.dte.org.in](http://www.dte.org.in)

**Library**

Reading room Timings	9 am to 8 pm
Reading room capacity	156 +
Digital Library	10 PCs + Tablets
Wi-Fi	Available
Classification System	DDC
Issue-Return of books	Barcode based - MIS
Book search	Yes – Web OPAC (Online Public Access Catalogue)
Titles	5000+
Volumes	28000+
Non Books	750+
Book Bank	Available
E - Journals	IEEE, McGraw Hill, J-Gate-Engg, Springer, ASTM, ELSEVIER Sc Direct, J-Gate-Mgt, EBSCO
E - Resources	Digital study material / NPTEL
Technical Journals	50
Periodicals	Available
Newspapers	Available

## IT Initiatives

**Wadala Data Center** - an on-premise Server Farm featuring;

A virtualized setup of servers providing totalling to 32 Cores and 96 GB of RAM, for day to day management of over 7500 students & staff at the Campus.

**SOPHOS firewall** – a state of the art application level gateway and firewall for the Institute that,

- Allows access to only authorized users based on the access level
- Provides IDS and virus protection to the Campus systems

**Wi-Fi setup** for the entire Institute controlled from the Data center via firewall

- Access points strategically located across the Campus for access to Internet services
- Authentication driven; restrictions based on users according to access level

**60+ Mbps of Internet** connection - 24x7 service availability.

### Server Farm

On this setup, reside the critical systems and services which together act as enablers for IT enhanced management and provide streamlined collaborations among different teams. The setup includes;

An **Active Directory** Setup that is the backbone of all Systems related operations. It provides;

- Centralized authentication to users on any of the Campus' systems and for Internet access
- A roaming profile specific to a user giving users the freedom to access their data on any system on the Campus
- Enhanced domain protection by enforcing group policies

## V-Print

- A state of the art, web based centralized printing service that allows users to give print jobs from around the globe to “Any Time Print” (ATP) stations at the Institute.
- Manages accounts and usage history for all users.
- Cheaper printing compared to alternatives available in the market.
- Colour and B/W printing options
- Duplex printing option to save papers
- Authentication integrated with Active Directory

## MIS for all academic and Institute administration

To manage the day to day operations of the Institute, a customized ERP for the Institute has been developed that looks after all administrative and academic processes of the Institute. Some of the crucial modules include;

- Staff attendances, payrolls and leaves
- Student – admission and exam processes handling
- Library
- Accounts, Stores and inventory management
- Gymkhana, Security, etc.

**Software License Management** via dedicated license servers for major development related softwares that are part of the curriculum.

A **thin computing client** - server that runs PCs, mainly for browsing purpose.

A **digital signage** solution that is also used to keep students updated about the latest happening of the Institute.

## Microsoft Partnership

Vidyalankar also has a Microsoft Partnership for;



## Open source alternatives

Apart from the above mentioned Microsoft solution, students are also provided with ample opportunities to work on open source solution as well. For this, machines are on Linux based operating systems (Ubuntu, Fedora, CentOS) so that students are also exposed to development techniques on these Operating Systems platforms.

Extensive AD integration has been used to provide this situation as well. Specific shell scripts have been written that help in,

- Authenticating users via AD
- Mounting the profile of a user on the Linux machine
- Enforce specific group policies thus maintaining sufficient security

**Internal Student Portal – Vidyalankar Live** - Developed and Managed by Vidyalankar students.

The web server houses the student portal of the Institutes. VidyalankarLive.com is essentially a web based forum that bridges the communication gap between students, the Faculty, the non-teaching staff and departments and the Management of the Institute. Apart from being a center for discussion and though sharing; VidyalankarLive is also houses multiple custom modules that are focussed on routine tasks of the Institute.

## Digital Learning

A pilot program of the Institute for Technology enhanced learning. Efforts are on for in house development of digital content suitable for iPad and other tablets.

## Official websites

An off-premise Web Server – having 8 GB RAM and 4 Cores housing all the official websites and internal student portals of the Institute which is managed remotely from the Campus.

## IT Consultancy

The Institute offers consultancy to other educational Institutes in,

- IT Infrastructure and management services

- Website hosting and student community portals
- Live streaming

### Summary of IT Infrastructure

Desktop PCs	780 (Branded)
Laptops	150
iPads	70
Network	all PCs
Internet	on all PCs

## Placements and Higher Studies

Works App	35.00
Barclay's Capital	8.00
MuSigma	7.00
Interactive	6.50
Mirraw.com	6.00
Yodlee Infotech	5.70
Oracle	4.20
Zeus Learning	4.20
Persistent	3.80
Allerin	3.60
Ariston	3.60
Ingram Micro	3.60
Zycus Infotech	3.60
Seclore Tech	3.50
TPG-AXON	3.50
WisdmLabs	3.50
AGC Networks Limited	3.35
Book My Show	3.25
Bristle Cone	3.25
Infosys Technologies	3.25
Zeus Learning	3.20
Reliance Retail	3.18
TCS	3.18
IGATE	3.15
Atos Origin	3.10
Tech Mahindra	3.07
Capgemini	3.05
Accenture	3.00
HCL Technologies	3.00
Health Mantra	3.00
Inbetween IT Services	3.00

L & T Infotech	3.00
Systemics	3.00
Thirdware	3.00
Vidyalankar	3.00
Vistaar	3.00
Mastek	2.90
Quinnox	2.71
Inscriptis	2.70
VitalHealth Software	2.70
Hexaware Technologies	2.50
Mphasis	2.50
Parametrix	2.50
Credence Analytics	2.40
DTC Innovative	2.40
Nipro Medical	2.40
Uniken	2.16
NCR	2.07
XcellLance Tech.	2.01
Thyrocare	2.00
Fargo Telecom	1.80
Gray Routes	1.80
Pamtrons	1.20
Tikona	1.02

Placements and Higher Studies

	<b>2014-15</b>
No. of Placements	258
Opted for Higher Studies	48