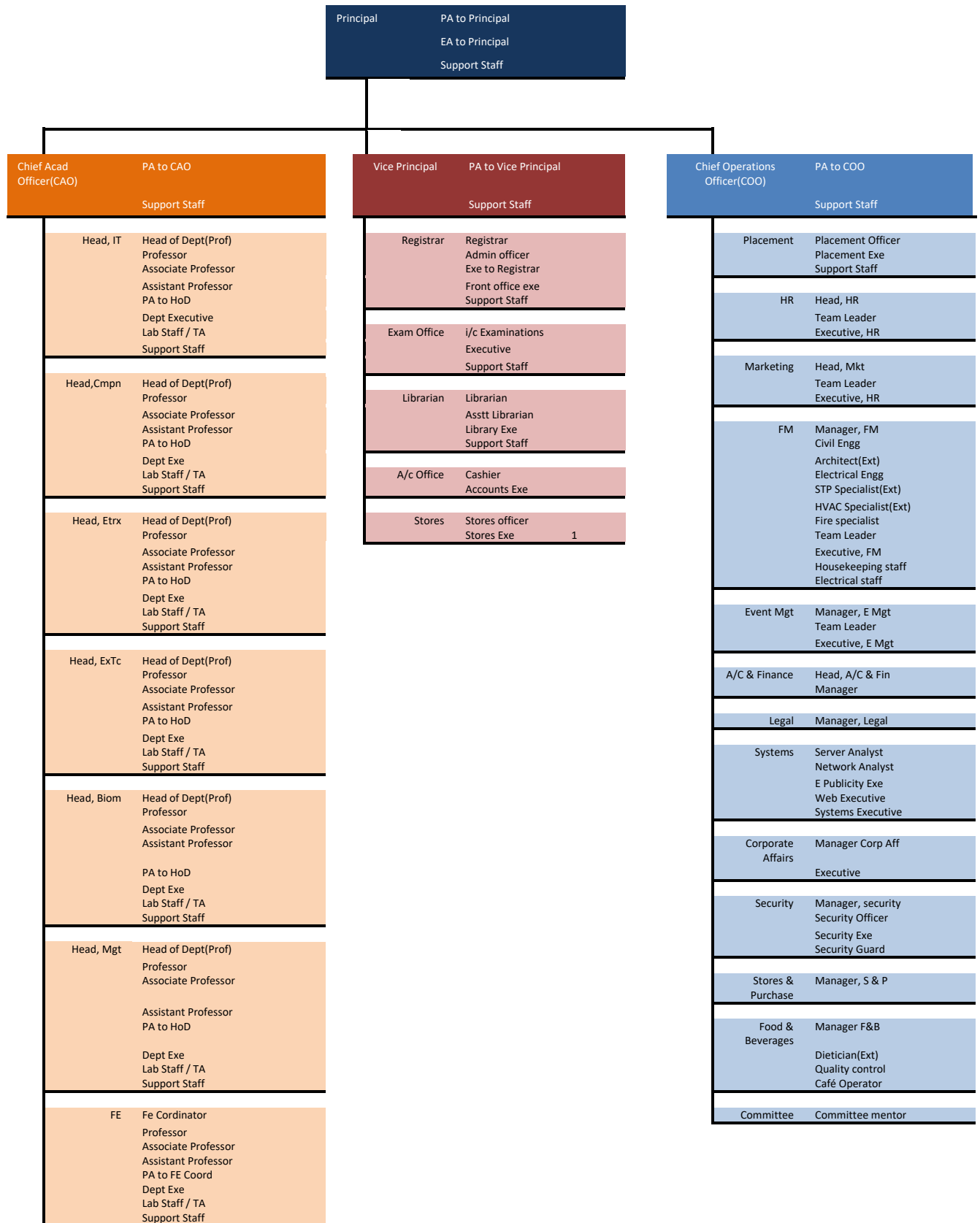


## Mandatory Disclosure

<b>Details about the Institution</b>	Vidyalankar Institute of Technology	
	Vidyalankar Campus, Vidyalankar College Marg, Wadala (E)	
	Mumbai - 400 037	
	Maharashtra	
	(022) 2416 11 26	
	principal@vit.edu.in	
	www.vit.edu.in	
<b>Details about the Trust</b>	Vidyalankar Dyanapeeth Trust	
	Pearl Centre, Senapati Bapat Marg, Dadar (West) ,Mumbai 400027	
	vdt@vidyalankar.edu.in	
	(022) 2416 11 26	
<b>Details about the Principal</b>	Dr. Sunil Patekar	
	022-24161126	
	principal@vit.edu.in	
<b>Details about the affiliating University</b>	University of Mumbai	
<b>Governance</b>	Smt. Rashmi Deshpande	Chairperson
	Shri. A. R. Chatorikar	Nominee,VDT
	Shri. Milind Tadvalkar	Nominee,VDT
	Dr. V. N. Gupchup	Nominee, VDT
	Nominee, VDT	Nominee, VDT
	Nominee, AICTE-Regional Officer(Ex-Officio)	Nominee, AICTE-Regional Officer(Ex-Officio)
	Industrialist / Technologist / Educationist nominated by regional committee as	Industrialist / Technologist / Educationist nominated by regional committee as
	Nominee of Council	Nominee of Council
	Nominee of UoM	Nominee of UoM
	Nominee of State Government - Director, DTE(Ex-officio)	Nominee of State Government -Director, DTE(Ex- officio)
	Nominee, State Government	Nominee, State Government
	Dr. Saurabh Mehta	Faculty Nominee
	Prof. Varsha Bhosale	Faculty Nominee
	Dr. S. A. Patekar	Principal & Member Secretary
	Members of Academic Advisory Body	Each department of the institute has an advisory a body as indicated in Table 2.
	Frequency of meetings	Twice a year
Academic Advisory Body	Every department has Department advisory Board(DAB) comprising nominations from Industry and academia.	
Frequency of meetings	Twice in every year.	

### Organogram of the Institute



<p>Nature and Extent of involvement of Faculty and students in academic affairs/improvements</p>	<p>The Institute has a strategic plan for development where the goals and action plans are stated and are aligned with the Institutes Vision and Mission. The plans are developed by the Steering Committee in consultation with IQAC and approved by the Governing Body.</p>
<p>Mechanism/ Norms and Procedure for democratic/ good Governance</p>	<p>The Principal is the academic &amp; administrative head who monitors the overall functioning and has powers for academic, administrative, finance and institute's growth. For efficient functioning, the day to day administration is coordinated by Vice Principal (VP) , academic administration at institute level is coordinated by the Chief Academic Officer (CAO), Training &amp; Placements, Committee activities are coordinated by Chief Operations Officer(COO). The institute has Technical Advisor (TA) who is also the director of Internal Quality Assurance Cell (IQAC). Academic Quality initiatives like academic audit processes and faculty performance appraisals are initiated and streamlined by the TA. VIT has decentralised its operations and has delegated authority at various levels to ensure good governance. There is a structured delegation of authority that encourages the academic leadership among the faculty within subject disciplines, peer groups through clusters and researchers through minor research proposals. Faculty are also empowered to decide academic/administrative/co- curricular/extra-curricular activities. Such decentralisation strengthens administrative skills with professional responsibility and accountability that ensures broader participation in decision-making process.</p>
<p>Student feedback mechanism on Institutional Governance/faculty performance</p>	<p>In every semester students feedback is taken twice for every course and faculty associated with their class/ course. This feedback is analyzed and discussed with concerned faculty by of Head of the Department.</p>
<p>Grievance redressal mechanism for faculty , staff and students</p>	<p>As per the Statutory requirement the Institute has duly constituted Grievance redressal committee. Every student is assigned a mentor where students can put forward their grievances (if any) , they can also discuss the same with respective Head of the department. For submitting grievance, there is a provision to give the details on the institute's website which is then resolved by the Grievance redressal committee.</p>
<p>Establishment of Anti- Ragging Committee</p>	<p>As per the Statutory requirement the Institute has duly constituted Anti-Ragging Committee with Anti ragging Squad.</p>
<p>Establishment of Online Grievance Redressal Mechanism</p>	<p>The online mechanism is set and to submit a grievance online by stakeholders. <a href="#">click here.</a></p>
<p>Establishment of Grievance Redressal Committee in the Institution and Appointment of OMBUDSMAN by the University</p>	<p>The Statutory Committee Grievance Redressal Committee (GRC) is formed as per Clause 1 of section 23 of the AICTE Act, 1987 (52 of 1987) AICTE. For further details <a href="#">click here.</a></p>
<p>Establishment of Internal Complaint Committee (ICC)</p>	<p>As per the directive received from the Government of Maharashtra State, the institute has duly constituted the Mahila Takrar Nivaran Samiti / Internal Complaint Committee (ICC) on 20 January 2014 to look into the grievances related to female Students/ Staff in the institute. For further details <a href="#">click here.</a></p>
<p>Establishment of Committee for SC/ ST</p>	<p>SC/ST cell has been constituted by the institution to resolve all the matters related to the SC/ST students and staff. For further details <a href="#">click here.</a></p>
<p>Internal Quality Assurance Cell</p>	<p>Internal Quality Assurance Cell (IQAC) is established by the Institute for continuous improvement of quality and achieving academic excellence. IQAC has initiated several quality reforms to improve teaching-learning processes, brand building and adopting ICT enabled environment for smooth functioning of academic processes. For further details <a href="#">click here.</a></p>

Programme offered	Information Technology(UG)				
	Computer Engineering(UG)				
	Electronics Engineering(UG)				
	Electronics and Telecommunication Engineering(UG)				
	Biomedical Engineering(UG)				
	Information Technology(PG)				
	Computer Engineering(PG)				
	Electronics and Telecommunication Engineering(PG)				
	Master of Management Studies(PG)				
Name of Programmes Accredited by AICTE	Electronics Engineering(UG)				
	Electronics and Telecommunication Engineering(UG)				
	Biomedical Engineering(UG)				
Status of accreditation of the courses	<p>The Institute is accredited by NAAC with A+ Grade (3.41 CGPA) w.e.f March 2019 till March 2024.</p> <p>The NBA has accredited three of the UG Programmes namely Electronics Engineering, Electronics &amp; Telecommunication Engineering and Biomedical Engineering w.e.f July 2016 till June 2022.</p> <p>Total number of Courses : 9</p> <p>No. of Courses for which applied for Accreditation : NIL</p> <p>Status of Accreditation – Preliminary/ Applied for SAR and results awaited/ Applied for SAR : NIL</p>				
Details about the courses	UG Intake & Dur	PG Intake & Dur	Cut off last 3Yrs	Fee	
	Information Technology	120 (8 Sem)	018 (4 Sem)	<a href="http://www.dtemaharshtra.gov.in">www.dtemaharshtra.gov.in</a>	<a href="http://www.sssamiti.org">www.sssamiti.org</a>
	Computer Engineering	120 (8 Sem)	018 (4 Sem)		
	Electronics Engineering	120 (8 Sem)	-		
	Electronics and Telecomm Engineering	120 (8 Sem)	018 (4 Sem)		
	Biomedical Engineering	060 (8 Sem)	-		
	Master of Management Studies	-	120 (4 Sem)		

<b>Placement Facilities</b>	Institute has a full-fledged Training and placement cell
Campus placement in last three years with maximum salary.	The Placement cell consists of faculty members, who work towards providing soft skill and technical training, internships and final placements. Institute has a dedicated team which works throughout the year to provide better placement to all the students in their area of interest.
Twinning and Collaboration with Foreign University(s)	Nil

<b>Faculty</b>	www.vit.edu.in		
<b>Profile of Faculty / Principal</b>	www.vit.edu.in		
Fee approved by State Fee Committee For academic year 2020-21	UG Engg	PG Engg	Management Studies
	150000	52000	150000
Time schedule for payment of fee for the entire programme	July to September		
No. of Fee waivers granted with amount and name of students	TFWS: 100 PMSSS/CSAB : 7		
Number of scholarship offered by the Institution, duration and amount	As per Government of Maharashtra norms		
Criteria for fee waivers/scholarship	Social welfare department offers scholarship / free ship for OBC,SBC,VJNT (Income less than Rs.8.00Lakhs),SC,ST (No income limit) category students		

Admission – Sanctioned Intake - UG		INFT	CMPN	ETRX	EXTC	BIOM
		1999	60	60	60	-
	2006	-	-	-	60	60
	2010	60(DSY)	60+60 (DSY)	-	60 (DSY)	-
	2012	-	-	-	60	-
	2013	60	-	60+60 (DSY)	-	-
Current Intake	2020	120	120	120	120	60
Admission – Sanctioned Intake - PG		MMS	INFT	CMPN	EXTC	
		2007	60	-	-	-
	2008	-	-	18	-	
	2010	-	18	-	18	
	2011	60	-	-	-	
Current Intake	2020	120	18	18	18	

Category wise student admissions		OP	OBC	SC	ST	VJ	NT1	NT2	NT3	SBC	OHR
	19-20	324	85	41	9	6	4	7	10	14	12
	18-19	342	79	51	7	7	10	13	10	10	11
	17-18	341	58	45	10	10	8	14	5	13	13
Institute Quota admissions		Applications received					Admissions done				
	19-20	238					498				
	18-19	257					591				
	17-18	261					623				
<b>Admission Procedure</b>											
Details of Admission test	UG	State admissions are done by State CET Cell based on State MHT-CET examination <a href="http://www.dtemaharashtra.gov.in">www.dtemaharashtra.gov.in</a> All India admissions are done on JEE score									
	PG	Admissions are done by State CET Cell based on GATE <a href="http://www.dtemaharashtra.gov.in">www.dtemaharashtra.gov.in</a>									
	MMS	Admissions are done by State CET Cell based on State MAH-CET examination <a href="http://www.dtemaharashtra.gov.in">www.dtemaharashtra.gov.in</a>									
Seats allotted	UG	85% for State quota based on State MHT-CET					15% for All India quota based on JEE				
	PG	100% based on GATE									
	MMS	100% based on MAH-CET									
Admission Calendar	Admission calendar is issued by State CET Cell										
	Jun	Admission notification									
	Jun-Jul	Admission rounds									
	Aug	Admission period ends									
Admission fee refund policy	As issued by State CET Cell										
Criteria and Weightages for Admission	Describe each criterion with its respective weightages i.e. Admission Test, marks in qualifying examination etc.					100% weightage to entrance test					
	Mention the minimum level of acceptance, if any					Admissions are done on the basis of non zero entrance test score and 150 (135 for reserved category) marks in Phy+Mth+(add sub) in std XII examination					

	Mention the cut-off levels of percentage and percentile score of the candidates in the admission test for the last three years	Non zero entrance test score
	Display marks scored in Test etc. and in aggregate for all candidates who were admitted	<a href="http://www.dtemaharashtra.gov.in">www.dtemaharashtra.gov.in</a>
Results of Admission Under Management seats/Vacant seats	Composition of selection team for admission under Management Quota with the brief profile of members (This information be made available in the public domain after the admission process is over)	UG(B.E): Mr. Pravin Garge(Assistant Professor, FE) Mr. Vipul Dalal(Associate Professor)  PG(M.E): Dr. Sachin Bojewar(Professor) PG(M.M.S):  Mr. Jay Bhatt (Assistant Professor, MMS) Ms. Trupti Naik (Assistant Professor, MMS)
	Score of the individual candidate admitted arranged in order or merit	<a href="http://www.dtemaharashtra.gov.in">www.dtemaharashtra.gov.in</a>
	List of candidate who have been offered admission	<a href="http://www.dtemaharashtra.gov.in">www.dtemaharashtra.gov.in</a>
	List of the candidate who joined within the date, vacancy position in each category before operation of waiting list	<a href="http://www.dtemaharashtra.gov.in">www.dtemaharashtra.gov.in</a>
Information of Infrastructure and Other Resources Available	Number of Class Rooms and size of each	Adequate
	Number of Tutorial rooms and size of each	Adequate
	Number of Laboratories and size of each	Adequate
	Number of Drawing Halls with capacity of each	Adequate
	Number of Computer Centres with capacity of each	Adequate
	Central Examination Facility, Number of rooms and capacity of each	Adequate
	Barrier Free Built Environment for disabled and elderly persons	Yes
	Occupancy Certificate	Yes
	Fire and Safety Certificate	Yes
	Hostel Facilities	No

<b>Library</b>	Number of Library books/ Titles/ Journals available (program-wise)	<a href="http://www.vit.edu.in">www.vit.edu.in</a>
	List of online National/ International Journals subscribed	<a href="http://www.vit.edu.in">www.vit.edu.in</a>
	E- Library facilities	Yes
<b>Laboratory and Workshop</b>	List of Major Equipment/Facilities in each Laboratory/ Workshop	<a href="http://www.vit.edu.in">www.vit.edu.in</a>
	List of Experimental Setup in each Laboratory/ Workshop	<a href="http://www.vit.edu.in">www.vit.edu.in</a>
<b>Computing Facilities</b>		
Internet Bandwidth	100 mbps	
Number and configuration of System	Adequate	
Total number of system connected by LAN	All	
Total number of system connected by WAN	All	
Major software packages available	As per syllabus	
Special purpose facilities available	Virtualized computing environment using open source software has been created for sharing resources. Four high end machines have been clustered with PROXMOX virtual engine. This cluster is used for sharing resources that can be used for IAAS.	
Innovation Cell	VIT has an Innovation Lounge which is a designated area wherein creative student projects are displayed to motivate other students. Photographs of renowned innovators are also displayed to create an encouraging ambience.	
Social Media Cell	VIT has Corporate Communication cell driven by the faculty members who looks after and handles communication over various social media platforms.  The social media links: Facebook, Twitter, Instagram and YouTube	
<b>Facilities available</b>		
Games and Sports Facilities	To inculcate the love of sports and to cater to the needs of sports enthusiasts on the campus, the Institute has well- maintained sports facilities.	
Extra-Curricular Activities	<p>To boost this intelligent creative spark in young minds, Vidyalandar, under the banner Alilā, introduces creative spaces/blocks.</p> <p>“Friday Paathshala” is an event to look forward to with great anticipation on Fridays between 4.45 pm to 6.30 pm. It gives students a reinvigorating break from academics and puts them in an entertaining mood. Dance, movie screenings, skit, rock shows, workshops and many more entertaining events give them an opportunity to enjoy fun-filled events on campus. In 2009 Friday Paathshala bagged the Silver ‘WOW’ Entertainment Award.</p> <p>TEDxVIT believe that the definition of success varies from person to person and that</p>	

	<p>there is no common parameter by which we can compare the journey and hard work of one man to another.</p> <p>VERVE the Annual Festival is organised which consists of technical, literary, sports and cultural activities.</p>			
Soft Skill Development Facilities	Language Laboratory ; VSpeak			
Teaching Learning Process	<a href="http://www.vit.edu.in">www.vit.edu.in</a>			
Academic Calendar of the University	<a href="http://www.vit.edu.in">www.vit.edu.in</a>			
Academic Time Table with the name of the Faculty members handling the Course	-			
Teaching Load of each Faculty	As per designation and expertise.			
Internal Continuous Evaluation System in place	Internal Assessment – Twice in a semester Practical / Tutorial evaluation – Weekly Assignments - Monthly			
Student’s assessment of Faculty, System in place	In every semester students’ feedback is taken twice for every course and faculty associated with their class/ course. This feedback is analyzed and discussed with concerned faculty in the presence of Head of the Department and Principal.			
Information related to PG course	Title of the Course	M.E. Information Technology M.E. Computer Engineering M.E. Electronics and Telecommunication Engineering Master of Management Studies		
	Curricula and Syllabi	Information Technology Computer Engineering Electronics and Telecommunication Master of Management Studies – Sem 1 And 2 Sem 3 And 4		
	Laboratory facilities exclusive to the Post Graduate Course	Available		
	Software, all design tools in case	Available		
	Academic Calendar and frame work	As per Mumbai University		
Enrollment to PG courses	IT	Comp Engg	ExTc Engg	MMS
19-20	6	8	3	120
18-19	8	18	18	120
17-18	6	5	11	120
16-17	18	18	18	116

List of Research Projects/ Consultancy Works	Chakali Maker - Funding agency- Icon Infotech Ltd., Mumbai vAssistance - Funding agency- Lakshmi Polyplast Industries IoT vBicycle - Funding agency- Vanmat Technologies Pvt. Ltd.			
Publications by PG students	IT	Comp Engg	ExTc Engg	
18-19	17	3	7	
17-18	18	10	10	
16-17	25	5	10	
<b>Industry Linkage - MOUs</b>	BOTSRule PVT LTD EDUVANCE (IBM Edtech Partner) MoU with MICROCHIP Training Partner (EDUVANCE) Question PRO INC.			
<b>LoA and subsequent EoA till the current Academic Year</b>	EOA for 20-21 received <a href="http://www.vit.edu.in">www.vit.edu.in</a>			
<b>Accounted audited statement for the last three years</b>	EOA for 20-21 received <a href="http://www.vit.edu.in">www.vit.edu.in</a>			
<b>Best Practices adopted</b>	<p>Vidyalankar, over a period of 19 years, has developed some best practices which added to the quality improvement in terms of teaching and learning at the Institute. VIT's best practices are the educational strategies, activities and approaches undertaken to ensure that each student gets maximum benefit from the educational experience at the Institute.</p> <p>The Institute has many prevalent best practices such as:</p> <ul style="list-style-type: none"> <li>• Academic Preview and Academic Review</li> <li>• Academic planning and preparation is meticulously monitored (Academic Preview) and its efficacy is checked and quantified in a well-defined process (Academic Review).</li> <li>• V Provisions (ICT enabled provisions) which is a digitization of many of the academic and administrative activities for empowering our staff and students with the active use of technology on the campus.</li> <li>• Tantravihar: Annual Project Exhibition and Competition</li> <li>• Cluster Mentor Meetings (Institute Mentor, External Academic Mentor and Industry Mentor) wherein related courses from across various programs are grouped under small 'clusters'. A Cluster Mentor is assigned to each Cluster who undertakes many responsibilities such as analysis of course content, gap mitigation, checking paper solutions and interfacing with External Academic Mentors and Industry Mentors to guide Cluster members for enriching the teaching-learning process. This system facilitates effective monitoring of academic progress in an environment of teamwork and bonding.</li> <li>• Monday Research and Development Sessions wherein the faculty members talks to their colleagues on varied areas like book reviews, technical presentations, paper presentations etc.</li> <li>• Robust Beyond Syllabus Activities like pop quiz, open book tests, seminars, coding competitions etc are held for the students.</li> </ul>			