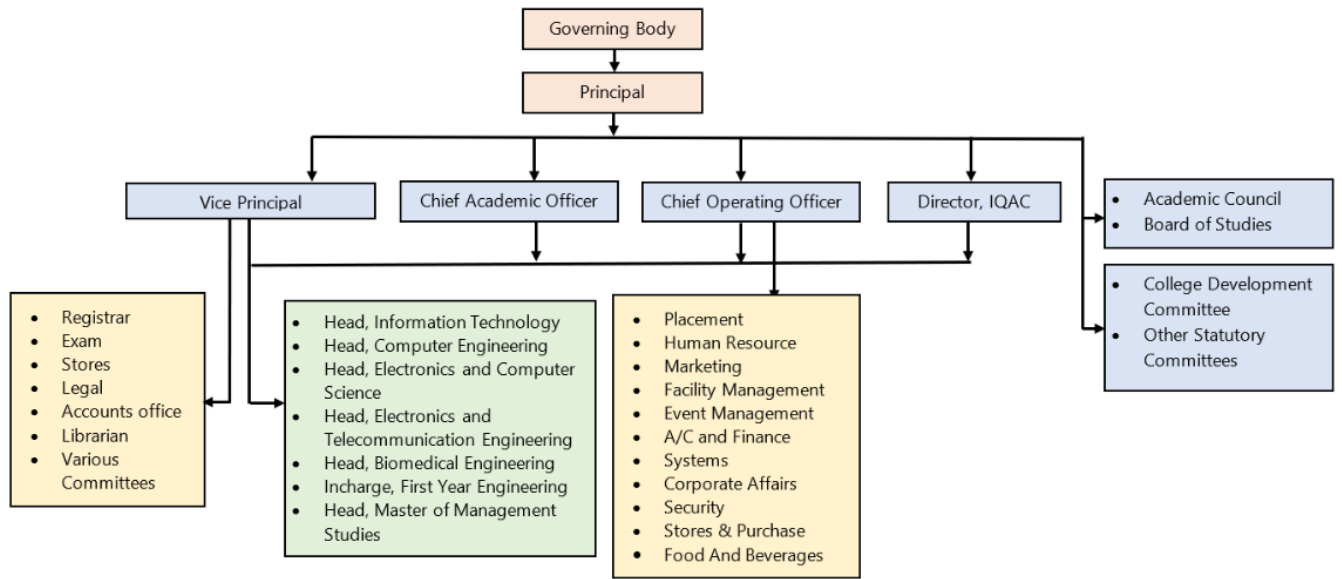


Mandatory Disclosure

Name and Address of the Institution	Vidyalankar Institute of Technology	
	Vidyalankar Campus, Vidyalankar College Marg, Wadala (E)	
	Mumbai - 400 037	
	Maharashtra	
	(022) 2416 11 26	
	principal@vit.edu.in	
	www.vit.edu.in	
Name and Address of the Trust	Vidyalankar Dnyanapeeth Trust	
	Pearl Centre, Senapati Bapat Marg, Dadar (West), Mumbai 400027	
	vdt@vidyalankar.edu.in	
	(022) 2416 11 40	
Details about the Principal	Dr. Sangeeta Joshi	
	(022) 2416 11 40	
	principal@vit.edu.in	
Details about the affiliating University	University of Mumbai	
Governance	Smt. Rashmi Deshpande	Chairperson
	Shri. A. R. Chatorikar	Nominee,VDT
	Shri. Milind Tadvalkar	Nominee,VDT
	Dr. V. N. Gupchup	Nominee, VDT
	Nominee, VDT	Nominee, VDT
	Dr. Neeta Kanekar	UGC Nominee
	Nominee of UoM	Nominee of UoM
	Dr. Vinod Mohitkar	Nominee of State Government -Director, DTE(Ex-officio)
	Dr. Pramod Naik	Educationist from the region nominated by the State Government
	Dr. Saurabh Mehta	Faculty Nominee
	Dr. Varsha Bhosale	Faculty Nominee
	Dr. Sangeeta Joshi	Principal & Member Secretary
	Members of Academic Advisory Body	Each department of the institute has a Board of Studies(BoS) and an advisory board. At Institute level there is an Academic Council (AC).
	Frequency of meetings	Twice a year
	Academic Advisory Body	Every department has BoS and Department advisory Board (DAB).The BoS, DAB and AC have a representative from Industry / academia (national & international level) and University of Mumbai nominee.
	Frequency of meetings	Twice in every year.

Organogram of the Institute



<p>Nature and Extent of involvement of Faculty and students in academic affairs/improvements</p>	<p>The Institute has a strategic plan for development where the goals and action plans are stated and are aligned with the Institutes Vision and Mission. Faculty at department level are involved in the development of various courses offered by the department. The head of department is Chairman Board of Studie. Each HoD is the part of Institute academic council which approves the syllabi, curriculum, and the evaluation methodology. The plans are developed by the Steering Committee in consultation with IQAC and approved by the academic council and the Governing Body.</p>
<p>Mechanism/ Norms and Procedure for democratic/ good Governance</p>	<p>The principal is the academic & administrative head who monitors the overall functioning and has powers for academic, administrative, finance and institute's growth. For efficient functioning, the day-to-day administration is coordinated by Vice Principal (VP), academic administration at institute level is coordinated by the Chief Academic Officer (CAO), Training & Placements, Committee activities are coordinated by Chief Operations Officer (COO). The institute has Internal Quality Assurance Cell (IQAC) and Chief Quality Officer(CQO).The Academic Quality initiatives like academic audit processes are initiated and streamlined by the CQA. There is faculty performance appraisals every semester. VIT has decentralized its operations and has delegated authority at various levels to ensure good governance. There is a structured delegation of authority that encourages academic leadership among the faculty within subject disciplines, peer groups through clusters and researchers through minor research proposals. Faculty are also empowered to decide academic/administrative/co-curricular/extra-curricular activities. Such de-centralization strengthens administrative skills with professional responsibility and accountability that ensures broader participation in the decision-making process.</p>
<p>Student feedback mechanism on Institutional Governance/faculty performance</p>	<p>In every semester student's feedback is taken twice for every course and faculty associated with their class/ course. This feedback is analyzed and discussed with concerned faculty by of Head of the Department.</p>
<p>Grievance redressal mechanism for faculty, staff and students</p>	<p>As per the Statutory requirement the Institute has duly constituted Grievance redressal committee. Every student is assigned a mentor where students can put forward their grievances (if any), they can also discuss the same with respective Head of the department. For submitting grievance, there is a provision to give the details on the institute's website. The grievance received is addressed and resolved immediately by the Grievance redressal committee.</p>
<p>Establishment of Anti- Ragging Committee</p>	<p>As per the Statutory requirement the Institute has duly constituted Anti-Ragging Committee with Anti ragging Squad.</p> <p>https://vit.edu.in/antiraggingcommittee/</p>
<p>Establishment of Online Grievance Redressal Mechanism</p>	<p>The online mechanism is set and to submit a grievance online by stakeholders.</p> <p>https://vit.edu.in/grievanceredressalcommittee/</p>
<p>Establishment of Grievance Redressal Committee in the Institution and Appointment of OMBUDSMAN by the University</p>	<p>The Statutory Committee Grievance Redressal Committee (GRC) is formed as per Clause 1 of section 23 of the AICTE Act, 1987 (52 of 1987) AICTE.</p>
<p>Establishment of Internal Complaint Committee (ICC)</p>	<p>As per the directive received from the Government of Maharashtra State, the institute has duly constituted the Mahila Takrar Nivaran Samiti / Internal Complaint Committee (ICC) on 20 January 2014 to look into the grievances related to female Students/ Staff in the institute. For further details click here.</p> <p>https://vit.edu.in/mahilatakramnivaransamiti/</p>
<p>Establishment of Committee for SC/ ST</p>	<p>SC/ST cell has been constituted by the institution to resolve all the matters related to the SC/ST students and staff. For further details click here.</p> <p>https://vit.edu.in/scstcommittee/</p>
<p>Internal Quality Assurance Cell</p>	<p>Internal Quality Assurance Cell (IQAC) is established by the Institute since 2014 for continuous improvement of quality and achieving academic excellence. IQAC has initiated several quality reforms to improve teaching-learning processes, brand building and adopting ICT enabled environment for smooth functioning of academic processes.</p> <p>https://vit.edu.in/naac/</p>
<p>Equal Opportunity Facilities Cell</p>	<p>As per the guidelines of UGC, an "Equal opportunity Cell" in the University has been set up for the compliance of the UGC (Promotion of Equity in Higher Educational Institutions) Regulation, 2019.</p>

Names of Programmes Approved by AICTE	Information Technology (UG)			
	Computer Engineering (UG)			
	Electronics and Computer Science (UG)			
	Electronics and Telecommunication Engineering (UG)			
	Biomedical Engineering (UG)			
	Computer Engineering (PG)			
	Electronics and Telecommunication Engineering (PG)			
	Master of Management Studies (PG)			
Name of Programmes Accredited by NBA	Information Technology (UG)			
	Computer Engineering (UG)			
	Electronics and Computer Science (UG)			
	Electronics and Telecommunication Engineering (UG)			
	Biomedical Engineering (UG)			
Status of Accreditation of the courses	<p>The Institute is accredited by NAAC with A+ Grade (3.41 CGPA) w.e.f. March 2019 till December 2027.</p> <p>The NBA has accredited all five UG Programmes namely Information Technology, Computer Engineering, Electronics Engineering, Electronics & Telecommunication Engineering and Biomedical Engineering till June 2025</p> <p>No. of Courses for Accreditation: Master of Management Studies</p> <p>Status of Accreditation – Preliminary/ Applied for SAR and results awaited/ Applied for SAR: Preliminary</p>			
Total number of Courses:	9			
Details about the courses	UG Intake & Duration	PG Intake & Duration	Cut off last 3Yrs	Fee
	Information Technology	180 (4 Years)	NA	www.cetcell.mahacet.org/ Fees Regulatory Authority (mahafra.org)
	Computer Engineering	180 (4 Years)	12 (2 Years)	
	Electronics and Computer Science	120 (4 Years)	NA	
	Electronics and Telecommunication Engineering	120 (4 Years)	12 (2 Years)	
	Biomedical Engineering	60 (4 Years)	NA	
	Master of Management Studies	NA	120 (2 Years)	

Placement Facilities	Institute has a full-fledged Training and Placement cell
Campus placement in last three years with maximum salary.	The Placement cell consists of faculty members, who work towards providing soft skill and technical training, Internships and final placements. Institute has a dedicated team which works throughout the year to provide better placement to all the students in their area of interest. Placements - VIT Vidyankar Institute of Technology
Twinning and Collaboration with Foreign University(s)	Nil

Faculty	www.vit.edu.in		
Profile of Faculty / Principal	https://vit.edu.in/team3/		
Fee approved by Fees Regulating Authority, Maharashtra State for academic year 2024-25	UG Engineering	PG Engineering	Management Studies
	152500	40000	150000
Time schedule for payment of fee for the entire Programme	July to September		
No. of Fee waivers granted with amount and name of students	TFWS: 120		
Number of scholarships offered by the Institution, duration, and amount	As per Government of Maharashtra norms		
Criteria for fee waivers/scholarship	As per the GR applicable for the Academic Year		

Admission – Sanctioned Intake - UG	Year	INFT	CMPN	ETRX/EXCS	EXTC	BIOM
		1999	60	60	60	-
	2006	-	-	-	60	60
	2010	60(DSY)	60+60 (DSY)	-	60 (DSY)	-
	2012	-	-	-	60	-
	2013	60	-	60+60 (DSY)	-	-
	2021	120	120	120	120	60
	2023	180	180	120	120	60
Current Intake	2024	180	180	120	120	60
Admission – Sanctioned Intake - PG		INFT	CMPN	EXTC	MMS	
		2007	-	-	-	60
	2008	-	18	-	-	-
	2010	18	-	18	-	-
	2011	-	-	-	60	-
	2021	18	18	18	120	-
	2023	Course Closed	12	12	120	-
Current Intake	2024	Course Closed	12	12	120	-

Category wise student admissions		OPEN	OBC	SC	ST	VJ	NT1	NT2	NT3	SBC	Total
	2024-25	496	102	52	22	14	12	11	15	10	734
	2023-24	500	97	59	21	11	7	18	07	10	730
	2022-23	344	77	45	16	09	09	15	12	11	568
Institute Quota admissions		Applications received					Admissions done				
	2024-25	4132					132				
	2023-24	1857					132				
	2022-23	1161					108				
Admission Procedure											
Details of Admission test		UG	State admissions are done by State CET Cell, based on State MHT-CET examination http://cetcell.mahacet.org/ All India admissions are done on JEE Mains score								
		PG	Admissions are done by State CET Cell based on GATE and academic /industry experience http://cetcell.mahacet.org/								
		MMS	Admissions are done by State CET Cell based on State MHT-CET examination conducted by Government of Maharashtra http://cetcell.mahacet.org/								
Seats allotted		UG	<ul style="list-style-type: none"> ○ 80% Centralized admission (65% Maharashtra State Candidates and 15% All India Seats) <ul style="list-style-type: none"> ○ 80% admissions are done through Centralized Admission Process (CAP) by the State Common Entrance Test Cell, Maharashtra State. Vacancies (if any) after CAP are filled at Institute level. ○ 20% Institute Level admission: <ul style="list-style-type: none"> ○ Details and schedule regarding Institute level quota admissions is displayed on the college website/ Notice Board. ○ For Supernumerary seats admissions under PMSSS/CSAB-NEUT/EWS/TFWS & J&K, the guidelines issued by the respective competent authority are followed. 								
		PG	<ul style="list-style-type: none"> ○ 80% Centralized admission (60% for non-Sponsored seats and 20% for Sponsored seats) <ul style="list-style-type: none"> ○ 80% admissions are done through Centralized Admission Process (CAP) by the State Common Entrance Test Cell, Maharashtra State; vacancies (if any) after CAP are filled at Institute level. ○ 20% Institute Level admission (15% for non-Sponsored seats and 5% for Sponsored seats) <ul style="list-style-type: none"> ○ Details and schedule regarding Institute level quota admissions are displayed on the college website/Notice Board. ○ For Supernumerary seats in EWS/TFWS and J&K the guidelines as per competent authority are followed. 								
		MMS	<ul style="list-style-type: none"> ○ 80% Centralized admission (65% Maharashtra State Candidates and 15% All India Seats) <ul style="list-style-type: none"> ○ 80% admission is done through Centralized Admission Process (CAP) by the State Common Entrance Test Cell, Maharashtra State. ○ 20% Institute Level admission: Details and schedule regarding Institute level quota admissions are displayed on the college website/Notice Board. ○ For Supernumerary seats admissions under EWS/TFWS and J&K, the guidelines issued by the respective competent authority are followed. 								

Admission Calendar	Admission calendar is issued by State CET Cell every year and the Institute follows the same.	
	Jun-Jul. 24	Admission notification
	Aug.24	Admission rounds
	Oct.24	Admission period ends
Admission fee refund policy	As issued by State CET Cell / AICTE	
Criteria and Weightages for Admission	Describe each criterion with its respective weightages i.e. Admission Test, marks in qualifying examination etc.	100% weightage to entrance test
	Mention the minimum level of acceptance if any	As per the guidelines given by State CET Cell, Government of Maharashtra http://cetcell.mahacet.org/
	Mention the cut-off levels of percentage and percentile score of the candidates in the admission test for the last three years	Nonzero entrance test score
	Display marks scored in Test etc. and in aggregate for all candidates who were admitted	On Institute's Website
Results of Admission Under Management seats/Vacant seats	Composition of selection team for admission under Management Quota with the brief profile of members (This information be made available in the public domain after the admission process is over)	UG (B.E): Dr. Ameya Nayadhish (Assistant Professor, FE) Prof. Rohit Barve (Assistant Professor, INFT) PG (M.E): Prof. Santosh Jagtap (Assistant Professor, EXTC) PG (M.M.S) : Dr. Jay Bhatt (Assistant Professor, MMS)
	Score of the individual candidate admitted arranged in order or merit	http://cetcell.mahacet.org/
	List of candidates who have been offered admission	http://cetcell.mahacet.org/
	List of the candidate who joined within the date, vacancy position in each category before operation of waiting list	http://cetcell.mahacet.org/
Information of Infrastructure and Other Resources Available	Number of Classrooms and size of each	Adequate
	Number of Tutorial rooms and size of each	Adequate
	Number of Laboratories and size of each	Adequate
	Number of Drawing Halls with capacity of each	Adequate
	Number of Computer Centre with capacity of each	Adequate
	Central Examination Facility, Number of rooms and capacity of each	Adequate
	Barrier Free Built Environment for disabled and elderly persons	Yes
	Occupancy Certificate	Yes
	Fire and Safety Certificate	Yes
Hostel Facilities	No	

Library	Number of Library books/ Titles/ Journals available (program-wise)	Titles: 6270 Volumes: 31410
	List of online National/ International Journals subscribed	IEEE, EBSCO, Knimbus
	E- Library facilities	Yes
Laboratory and Workshop	List of Major Equipment/Facilities in each Laboratory/ Workshop	www.vit.edu.in https://vit.edu.in/academic/
	List of Experimental Setup in each Laboratory/ Workshop	www.vit.edu.in https://vit.edu.in/academic/
Computing Facilities		
Internet Bandwidth	500 Mbps	
Number and configuration of System	877	
Total number of systems connected by LAN	All	
Total number of systems connected by WAN	All	
Major software packages available	As per syllabus	
Special purpose facilities available	Virtualized computing environment using open-source software has been created for sharing resources. Four high end machines have been clustered with PROXMOX virtual engine. This cluster is used for sharing resources that can be used for IAAS.	
Innovation Cell	VIT has IIC (Institute's Innovation Council) under Ministry of education Initiative. It also has an Innovation Lounge which is a designated area wherein creative student projects are displayed to motivate other students. Photographs of renowned innovators are also displayed to create an encouraging ambience.	
Social Media Cell	VIT has Corporate Communication cell driven by the faculty members who looks after and handles communication over various social media platforms. The social media links: Facebook, Twitter, Instagram and YouTube	
Compliance of the Academic Bank of Credit (ABC), applicable to PGCM/ PGDM Institutions and University Department	The Institute has followed the guidelines of UGC, State Government and University of Mumbai regarding implementation of Academic Bank of Credit (ABC). The results upto 2023 are uploaded on ABC portal.	
Facilities available		
Games and Sports Facilities	To inculcate the love of sports and to cater to the needs of sports enthusiasts on the campus, the Institute has well- maintained sports facilities.	
Extra-Curricular Activities	<p>To boost this intelligent creative spark in young minds, Vidyalankar, under the banner Alilā, introduces creative spaces/blocks.</p> <p>"Friday Paathshala" is an event to look forward to with great anticipation on Fridays between 4.45 pm to 6.30 pm. It gives students a reinvigorating break from academics and puts them in an entertaining mood. Dance, movie screenings, skits, rock shows, workshops and many more entertaining events give them an opportunity to enjoy fun-filled events on campus. In 2009 Friday Paathshala bagged the Silver 'WOW' Entertainment Award.</p> <p>TEDxVIT believe that the definition of success varies from person to person and that there is no common parameter by which VERVE the Annual Festival is organised which consists of technical, literary, sports and cultural activities.</p>	

Soft Skill Development Facilities	Language Laboratory; vSpeak		
Teaching Learning Process	Institute has well planned teaching learning process and has robust methodology for rolling out the process. At the same time there is well planned structure, as per the Guidelines of IQAC, to review the Teaching Learning Process. There are various teaching learning Processes like Subject Allocation, Preparation of Academic Administration Plan, Cluster mentor meetings, Faculty Preview, Student mentoring, etc. Each of these activities are planned by the faculty and are reviewed thoroughly in Faculty Preview before rolling, once the activities are rolled out, their progress is monitored as per the type of activity. The outcomes are analyzed in Faculty Review and discussed with concerned faculty for further improvements.		
Academic Calendar of the Institute	www.vit.edu.in		
Academic Timetable with the name of the faculty members handling the Course	Uploaded on Institute's portal (vRefer)		
Teaching Load of each Faculty	As per designation and expertise.		
Internal Continuous Evaluation System in place	Internal Assessment – Monday Weekly Tests, Assignments in each week		
Student's assessment of Faculty, System in place	In every semester students' feedback is taken twice for every course and faculty associated with their class/course. This feedback is analyzed and discussed with concerned faculty in the presence of Head of the Department and Principal.		
Information related to PG course	Title of the Course	M.E. Computer Engineering M.E. Electronics and Telecommunication Engineering Master of Management Studies	
	Curricula and Syllabi	2022_Final_VIT_CMPN_Autonomy_Structure_MTech.pdf EXTC_MTech_Program_Structure_2022.pdf 2024_Final_VIT_MMS_Programme_Structure_First_Year_Autonomy_R2024-2026_Batch.pdf	
	Laboratory facilities exclusive to the Post Graduate Course	Available	
	Software, all design tools	Available	
	Academic Calendar and framework	As per Mumbai University	
Enrollment to PG courses	CMPN	EXTC	MMS
2024-25	12	7	129
2023-24	12	6	129
2022-23	8	1	132

List of Research Projects/ Consultancy Works	Funded Projects from DST through IIT Bombay Dr. Dhananjay Patel has received research funding of 36 Lakhs from Technology Incubation Hub (TIH)-IoT, IIT Bombay, he along with student groups is working on four different projects: 1. Smart Ploughing Device 2. Voice Controlled Robot 3. Trichoscopy and Trichogram analysis 4. Design and Fabrication of Onion Harvester. 5. Multilingual Sign Language App. 6. Soil Errosion Detction and Prevention Using IoT. Dr. Sheetal Mapare has received research funding of 6 Lakhs from Technology Incubation Hub (TIH)-IoT, IIT Bombay, she along with student groups is working on the project related to Soil Analyser. Dr. Sushopti Gawade has received research funding of 6 Lakhs from Technology Incubation Hub (TIH)-IoT, IIT Bombay, she along with student groups is working on the project related to Grape Guard AI based Disease Monitoring System		
Publications by PG students	INFT	CMPN	EXTC
2023-24	Course Closed	2	1
2022-23	2	3	4
2021-22	3	2	4
Industry Linkage - MOUs	<ul style="list-style-type: none"> • CereLabs Pvt.Ltd • Cognitio Knowledge Tech Pvt Ltd • SunCreattica, Mumbai • Innoshri Pvt. Ltd. Pune • Mumbai Gujarati Sangathan (MGS) • Seva Saha Yog • Go -Green Technologies, Mumbai • YPP technologies, Mumbai • A2AW systems Pvt. Ltd. • Firebird VR Pvt. Ltd. • Uttakarsh Minds Pvt Ltd • Arthvedh Consulting Pvt. Ltd. Pune • CDAC • Kloudlnear Technologies Pvt Ltd • Cloud Counselage Pvt. Ltd. • Cerebranium • DigiSec360IN Solutions Pvt. Ltd. • CyberFrat • Yashoganga • Excelr • Sewa Sahayog • Theia New Consultancy • Centre for Social and Behavior Change Communication • Semi-Conductor laboratory Chandigarh • Cambridge University UK • Vihangam • Rushipundit Digital School • Go Green Technologies • Scad Technologies • Inficorridor • BSNL • RCF • University of Cambridge • Drona Avation Pvt.Ltd. • Grok Learning Pvt.Ltd. • Jupiter Hospital • Pace Rover Medical Systems • Monitra Healthcare 		

	<ul style="list-style-type: none"> • ChembioSens • Capgemini • Asha Foundation • The Movement India • My green society • Chitale Bandhu • SP-TBI • MACCIA • AlgOmega • Rovren • R A Poddar College of Commerce & Economics • 3.0 University (www.3university.io) • National Institute of Securities Markets (NISM)
LoA and subsequent EoA till the current Academic Year	EOA for 24-25 EOA 2024-2025
Accounted audited statement for the last three years	Available
Best Practices adopted	<p>Institute strongly believes in imparting value-based education where learners are nurtured with respect to gender equity, environmental consciousness and sustainability, inclusiveness, and professional ethics. Institute promotes environmental consciousness through sustainable waste management practices and green initiatives. It also has constituted a Green VIT Club to promote green initiatives. The Institute shows sensitivity to its differently abled learners by making various provisions for them. Being centrally located, the Institute has been a center for programmes organized by the Government of Maharashtra, Mumbai University, Mumbai Police etc. Inspired by Swachh Bharat Abhiyan, the Institute has taken an initiative of adopting Wadala Railway Station for beautification and upkeep. It also organizes regular health check-up camps to benefit the local community. Institute maintains complete transparency in its functioning and promotes national consciousness and unity.</p> <p>Institute has many noteworthy best practices, of which two are elaborated:</p> <ol style="list-style-type: none"> 1. vProvisions: Institute extensively uses vProvisions (ICT enabled provisions like vLive, vPrint, vRefer, vMIS, E-learning, and Open Course Ware, vTutorial) in all academic, administrative and organizational processes and equips learners with digital practices of the corporate world. 2. Academic Preview and Review: These processes emphasize on meticulous academic planning, dissemination and continuous improvement to ensure academic excellence 3. Enhancing Learning Experience through Lectures by Faculty of International and National Institutes and Experts from Industry Brief Description of Practice VIT has always believed in providing an enriched learning experience for our student community. Guest lectures by experts from industry as well as other academic institutions are a well-established practice in the teaching-learning process at the Institute. One guest lecture per course per semester is mandatory since 2014, which is a unique practice at the Institute. Taking this practice to the next level, VIT has initiated a practice of an entire course to be conducted by external instructors from universities abroad or prestigious academic institutions like IITs or NITs or by industry personnel to enable sharing of cutting-edge technology. Process Once the course and the appropriate external faculty are identified, the execution of the course is planned and the resources required are identified. The external faculty are supported by an internal shadow teacher, who is assigned to take responsibility for the course operational support and personalized learning assistance of the learners. In case the external faculty member is not always available, the shadow teacher steps in to support the learners in case of queries, assessment, or feedback on projects. The course may be conducted online, offline, or in blended mode. This practice was initiated in the Academic Year 2022-23 at the Institute, and is being implemented for students of second year, third year and final year of engineering. For instance, the course "Analysis of Algorithm" was conducted by Prof. Dr. Rajiv Gandhi (Professor at Rutgers University) in online mode for the fourth semester students of Second Year Computer Engineering. On similar lines, the course Data Mining & Business Intelligence was conducted by Mr. Vishal Bhalla, CTO of a company based in the USA, in online mode for the sixth semester students of

	<p>Third Year Information Technology. At the Institute level, the students' learning and assessment were supported by internal faculty from the respective Departments under the concept of shadow teaching for these two courses. As per the Institute's provisions of Autonomous rules and regulations, these faculty have changed the method of evaluation in tune with their pedagogical approach. Outcomes Such lectures by external instructors are an opportunity for learners to be acquainted with alternative technologies, diverse perspectives, information from varied sources, and sharing of professional experiences by experts. It also offers opportunities to the faculty members to collaborate with external resource personnel and enrich their academic preparation and get valuable exposure to industry applications and experiences. Students' feedback is also observed to be good with such initiatives.</p> <p>The Institute's distinctiveness lies in its strong learner-centric approach with which it strives to generate competent professionals and responsible global citizens who are sensitized towards the needs of the society. In a progressive environment, VIT offers the right blend of an appropriate toolset, a professional skillset and a motivated mindset for its learners to excel.</p>
--	---